





93a St Michaels Street, Shrewsbury, Shropshire, SY1 2HE  
£895 PCM

A well presented modern semi-detached property benefiting from off-road parking and conveniently located on St Michaels Street, within easy reach of Shrewsbury town centre.



The accommodation comprises: entrance hall, ground floor cloakroom, and an open-plan kitchen/living area. On the first floor there are two bedrooms and a family bathroom.

The property benefits from gas-fired central heating and UPVC double glazing throughout. To the rear is a small enclosed courtyard garden, together with a single parking space.

Available now. Council tax band B - Shropshire Council. EPC Rating C.

Rent £895pcm  
Tenancy Deposit: £1,030  
Holding Deposit £200

UPVC panelled and glazed front door with chrome furnishings leading to:

#### **ENTRANCE HALL**

9'0" x 4'2" (2.74 x 1.27)

With radiator, ceramic tiled flooring, central light point, staircase leading to first floor, door to:

#### **DOWNSTAIRS CLOAKROOM**

Fitted with white suite comprising low level WC, wall mounted wash hand basin, ceramic tiled flooring, lighting point, extractor fan, UPVC double glazed opaque glass window to the side.

#### **KITCHEN/LIVING AREA**

14'7" x 14'6" max (4.45 x 4.42 max)

With fitted contemporary kitchen with gas hob and electric cook included, space for upright fridge/freezer, space and plumbing set for washing machine, radiator, power and lighting points, UPVC double glazed sash style window to the front, UPVC double glazed window to the rear, door to useful under-stairs storage cupboard, UPVC double glazed French door leading to small paved patio courtyard to the rear.

From entrance hall, stairs with hand rail leading to:

#### **LANDING**

With central light point, UPVC double glazed window to the rear, access to bedroom accommodation comprising:

#### **BEDROOM ONE (FRONT)**

9'8" x 8'8" (2.95 x 2.64)

With radiator, power and lighting points, TV aerial socket, UPVC double glazed sash style window to the front.

#### **BEDROOM TWO (FRONT)**

11'3" x 8'2" narrowing to 4'6" (3.43 x 2.49 narrowing to 1.37)

With radiator, power and lighting points, UPVC double glazed sash style window to the front, built-in storage cupboard.

#### **BATHROOM**

Fitted with white suite comprising panelled bath with fitted shower, glazed shower screen, low level WC, wash hand basin with tiled splash, radiator, extractor fan, central light point, UPVC double glazed opaque glass window to the rear.

#### **EPC Rating C**

For a full copy of the Energy Performance Certificate please contact agents

#### **Council Tax Band B**

Shropshire Council

#### **Assured Periodic Tenancy (APT)**

#### **Viewings**

By appointment only through Roger Parry & Partners

#### **Measurements**

All measurements mentioned in these letting particulars are approximate

#### **Holding Deposit**

PLEASE READ: Before your application can be fully considered, you will be required to pay Roger Parry & Partners a holding deposit equivalent to one week's rent for the property you wish to apply for. You are advised to familiarise yourself with your legal rights and may wish to seek independent legal advice before signing this or any other document provided by us. Once the holding deposit has been received, current legislation allows a maximum of 15 days for the necessary paperwork to be completed. This period may only be extended by written agreement between both parties. The holding deposit may be retained in the following circumstances:

- If you decide not to proceed with the tenancy during the 15-day period
- If you unreasonably delay responding to reasonable requests from Roger Parry & Partners or Rightmove Landlord & Tenant Services
- If you provide false or misleading information as part of your application
- England only - If you fail the checks the Landlord is legally required to carry out under the Immigration Act 2014 (Right to Rent)

In these circumstances, the holding deposit will be retained by Roger Parry & Partners and the Landlord.

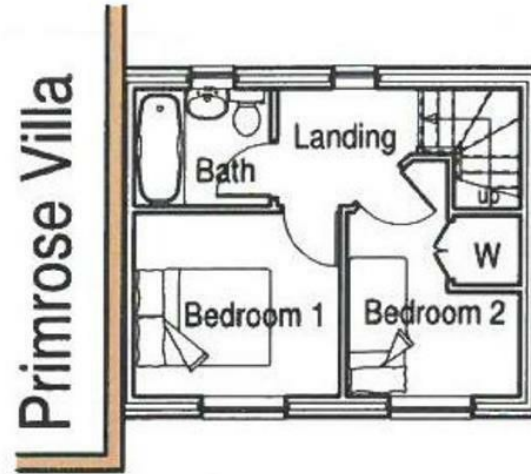
If the Landlord decides not to proceed with the tenancy for reasons unconnected with the above, the holding deposit will be refunded within seven days.

If you are offered a tenancy and you accept it, the holding deposit can be credited towards the first month's rent or tenancy deposit if all parties are in agreement.

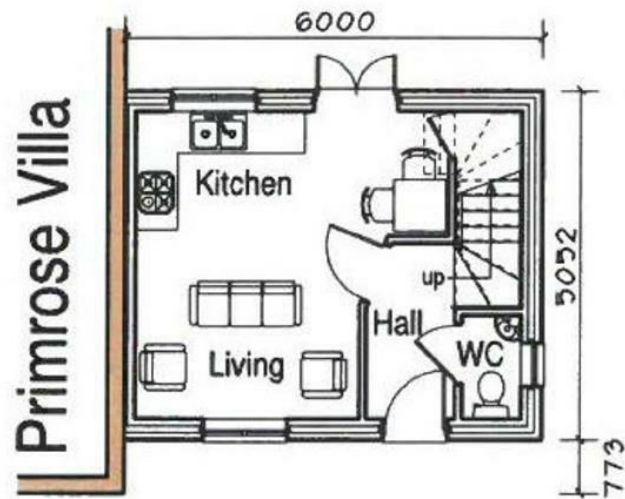
Where the holding deposit is neither refunded nor credited, you will be provided with written reasons within seven days explaining why it has been retained.

By submitting your application, you agree to pay any such permitted fees if they become due.

Floor Plan  
(not to scale - for identification purposes only)



First Floor Plan



Ground Floor Plan

## General Services:

**Local Authority:** Shropshire County Council

**Council Tax Band:** B

**EPC Rating:** C

**Tenure:**

**Fixtures and fittings:** No fixtures and fittings are necessarily included in the sale unless agreed at point of sale or point of subsequent negotiations.

**Wayleaves, rights of way and easements:** The property will be sold subject to and with the benefit of all wayleaves, easements, and rights of way, whether mentioned in these particulars or not.

## Directions:

## Viewing arrangements

Viewing of the property is strictly by appointment only through:

Roger Parry & Partners LLP

Please contact our Shrewsbury Office:

165 Frankwell, Shrewsbury, Shropshire, SY3 8LG  
shrewsbury@rogerparry.net

01743 343343



Important Notice: 1. Nothing in these particulars shall be deemed to be a statement that the property is in good structural condition or otherwise nor that any of the services, appliances, equipment or facilities are in good working order. Purchasers should satisfy themselves of this prior to purchasing. 2. Any areas, measurements, aspects or distances referred to are given as a GUIDE ONLY and are NOT precise. If such details are fundamental to a purchase, purchasers must rely on their own enquiries. 3. Descriptions of the property are subject and are used in good faith as an opinion and NOT as a statement of fact. Please make further enquiries to ensure that our description is likely to match any expectations you may have. 4. Where any references are made to planning permission or potential uses such information is given by Roger Parry & Partners in good faith. Purchasers should make their own enquiries into such matters prior to the purchase. 5. The photograph(s) depict only certain parts of the property. It should not be assumed that any contents/furniture etc. photographed are included in the sale. It should not be assumed that the property remains as displayed in photograph(s). No assumptions should be made with regards to parts of the property that have not been photographed. 6. These sale particulars have been prepared in all good faith to give a fair overall view of the property. If any points are particularly relevant to your interest in the property, please ask for further information.